

Rittal – The System.

Faster – better – everywhere.



Sustainability that works

Minimising CO₂ emissions – the Blue e+ way



ENCLOSURES

POWER DISTRIBUTION

CLIMATE CONTROL

IT INFRASTRUCTURE

SOFTWARE & SERVICES



FRIEDHELM LOH GROUP

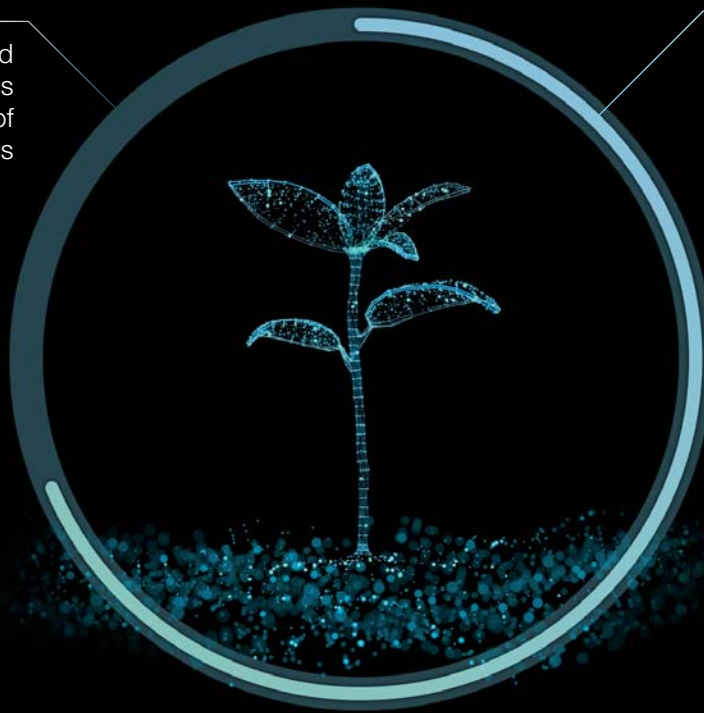
Sustainability is our priority. Yours too?

Sustainable use of resources

Speed-controlled
cooling extends
the working life of
the components

Annual carbon savings
per unit equate to the

CO₂ absorption
of 80 trees



Sustainability is high on the global agenda, alongside digitalisation. Companies need to find workable solutions to reconcile political and environmental concerns with growing energy needs as well as the economic challenge of rising electricity prices.

Customers are increasingly factoring into their purchasing decisions a company's sustainability credentials.

Now is the time to take action. We're ready. Are you?



75%

energy savings

with each

Blue e+ unit

Sustainability that works.

Blue e+ technology

In 2015, Rittal launched the world's most efficient range of enclosure cooling units: Blue e+. Since then, the range has continuously been developed, advanced and upgraded. Average energy savings compared with conventional cooling units are in the region of 75%, which translates into a significantly reduced carbon footprint.

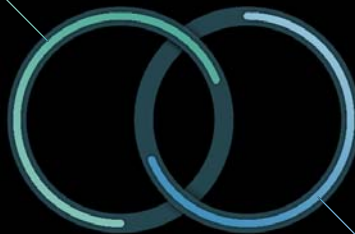
What's more, Blue e+ boasts one-of-a-kind technology, extended service life for the installed components thanks to reduced temperature fluctuations, as well as global usability and integration into the IoT. Its revolutionary energy efficiency is achieved due to its ingenious hybrid technology, featuring two parallel cooling circuits that can operate independently or in tandem with each other depending on the temperature fluctuation.

The uniqueness of the Blue e+ technology uses the interactive nature and power of passive and active cooling circuits. Two circuits that continuously adapt perfectly to the ambient conditions and with maximum efficiency.

**Further information
can be found at:**

www.rittal.com/CO2Footprint

Passive cooling circuit:
The heat pipe dissipates heat from the enclosure as soon as the ambient temperature drops below the setpoint



Active cooling circuit:
Speed-controlled components for demand-based cooling

Your benefits:



- Improved efficiency: Average energy savings of 75% per Blue e+ unit
- Greater flexibility: For any application, location or output range
- Added certainty: Maximum reliability, less maintenance-intensive and quickly ready for use
- Greater simplicity: Effortless planning, operation and installation

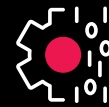
New: Blue e+ S: Sustainability for outputs of up to 1,000 W



The new Blue e+ S cooling units: Now even more sustainable power for the 300 – 1000 W output categories. With a new design, smart functions and even faster more reliable processes due to Rittal's Smart Service condition monitoring tool.



Now more sustainable, thanks to a world-beating energy efficiency rating and the least possible Global Warming Potential



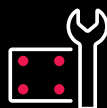
Now even better, with digital connection via smart monitoring, IoT interface and our Scan & Service app



Now more versatile, with multi-voltage capability for global use



Now more convenient, due to easy and quick accessibility for maintenance and service



Now faster, with improved handling and easier assembly



Now more reliable, because any changes to the status of the system are indicated by LED lights

**Further information
can be found at:**


www.rittal.com/blue_e_plus_s

Blue e+: Sustainable technology for all applications

A cooling unit that's at home in any environment. Blue e+ units are ideal for all industry sectors and environments. A range of efficient solutions exists for every requirement and application:

- A wide output range covering all cooling requirements from 0.3 – 5.8 kW
- Sheet steel design for all typical industrial sector applications
- Stainless steel & chemical options available for challenging environmental conditions
- Robust outdoor version with anti-vandalism features
- International approvals and multi-voltage capability for worldwide use



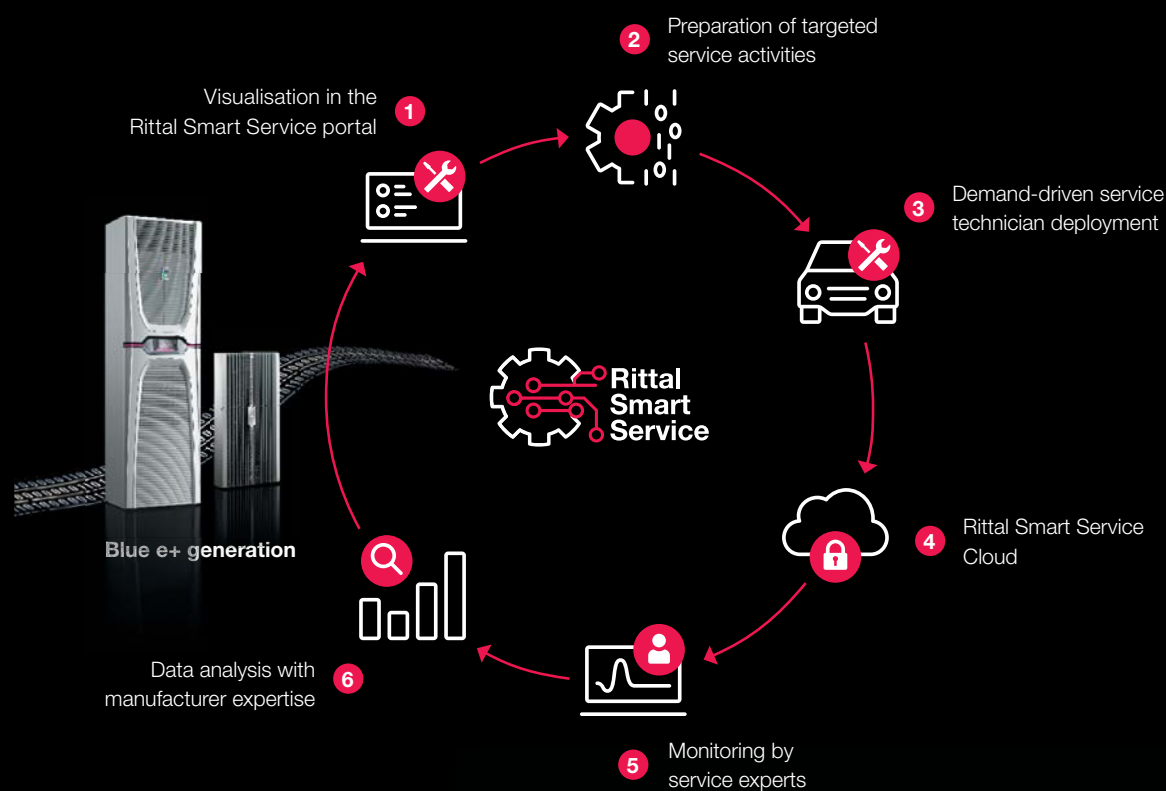

1 t CO₂
savings
per unit/year –
the amount of CO₂
absorbed by a beech
tree in **80 years**

Digitalisation for seamless processes

**Further information
can be found at:**
www.rittal.com/smartservice

Rittal Smart Service solution: Real-time display and monitoring of all networked cooling units – for demand-driven maintenance, early detection of critical faults and maximum system uptime.

Rittal Smart Service



Available on the App Store
and Google Play



Scan & Service app: Direct access for a superior overview and easier operation of the cooling unit.

IoT Interface: Intelligent networking of Rittal cooling solutions or sensors for monitoring ambient conditions.

Model No.	Total cooling output L35 L35	Rated voltage, 50/60 Hz	Dimensions [mm]			Installation type		
			Width	Height	Depth	External mounting	Partial internal mounting	Full internal mounting
Blue e+ S, sheet steel								
3178.800	300 W	110 - 240 V, 1~	300	570	159	■		■
3178.801	300 W	110 - 240 V, 1~	300	570	159	■		■
3179.800	520 W	110 - 240 V, 1~	300	570	199	■		■
3179.801	520 W	110 - 240 V, 1~	300	570	199	■		■
3184.800	1000 W	110 - 240 V, 1~	400	950	196	■		■
3184.840	1000 W	380 - 480 V, 2~	400	950	196	■		■

Blue e+, sheet steel*								
3185.830	1600 W	110 - 240 V, 1~ 380 - 480 V, 3~	400	950	310	■	■	■
3186.930	2000 W	110 - 240 V, 1~ 380 - 480 V, 3~	450	1600	294	■	■	■
3187.930	2600 W	110 - 240 V, 1~ 380 - 480 V, 3~	450	1600	294	■	■	■
3188.940	4200 W	380 - 480 V, 3~	450	1600	393	■	■	■
3189.940	5800 W	380 - 480 V, 3~	450	1600	393	■	■	■

Blue e+, stainless steel*								
3185.530	1600 W	110 - 240 V, 1~ 380 - 480 V, 3~	400	950	310	■	■	■
3186.630	2000 W	110 - 240 V, 1~ 380 - 480 V, 3~	450	1600	294	■	■	■
3187.630	2600 W	110 - 240 V, 1~ 380 - 480 V, 3~	450	1600	294	■	■	■
3188.640	4200 W	380 - 480 V, 3~	450	1600	393	■	■	■
3189.640	5800 W	380 - 480 V, 3~	450	1600	393	■	■	■

Blue e+, chemical*								
3185.835	1600 W	110 - 240 V, 1~ 380 - 480 V, 3~	400	950	310	■	■	■
3186.935	2000 W	110 - 240 V, 1~ 380 - 480 V, 3~	450	1600	294	■	■	■
3187.935	2600 W	110 - 240 V, 1~ 380 - 480 V, 3~	450	1600	294	■	■	■
3188.945	4200 W	380 - 480 V, 3~	450	1600	393	■	■	■
3189.945	5800 W	380 - 480 V, 3~	450	1600	393	■	■	■

Blue e+ outdoor**								
3185.330	1500 W	110 - 240 V, 1~ 380 - 480 V, 3~	467	1042	280	■	■	■
3186.330	2000 W	110 - 240 V, 1~ 380 - 480 V, 3~	517	1692	260	■	■	■
3187.330	2500 W	110 - 240 V, 1~ 380 - 480 V, 3~	517	1692	260	■	■	■
3188.340	3800 W	380 - 480 V, 3~	517	1692	360	■	■	■
3189.340	5000 W	380 - 480 V, 3~	517	1692	360	■	■	■

Blue e+, roof-mounted***								
3185.730	1300 W	110 - 240 V, 1~ 380 - 480 V, 3~	700	308	560	■		

*Operating temperature range: -20 °C - +60 °C | IP protection category and UL Type: IP 55, UL Type 12 and 3R | Integrated condensate evaporation except for 3178.801 and 3179.801

**Operating temperature range: -30 °C - +60 °C | IP protection category and UL Type: IP 56, UL Type 12, 3R and 4 | Integrated condensate evaporation

***Operating temperature range: -20 °C - +60 °C | IP protection category and UL Type: IP 54, UL Type 12 | Condensate evaporation optionally available as an accessory

Technical specifications: www.rittal.com/wallmounting
 Design software: www.rittal.com/therm
 Enclosure configuration: www.rittal.com/configurators

Rittal – The System.

Faster – better – everywhere.

- Enclosures
- Power Distribution
- Climate Control
- IT Infrastructure
- Software & Services

You can find the contact details of all Rittal companies throughout the world here.



www.rittal.com/contact

X1WW00246EN2204

ENCLOSURES

POWER DISTRIBUTION

CLIMATE CONTROL

IT INFRASTRUCTURE

SOFTWARE & SERVICES



FRIEDHELM LOH GROUP